



Policy Name:	KAU Graduate Attributes Policy
--------------	---------------------------------------

Liaison Official	Consultants' Unit	Revision Date	28.08.2021
Responsible Party	Vice-Presidency for Educational Affairs	Approval Date	05.09.2021
Approved by	Vice-President for Educational Affairs	Next Revision Date	26.08.2024
Relevant Policies		No. of Pages	3

A. Aim

- 3- KAU Graduate Attributes Policy aims to organize and administer the development, alignment and evaluation of the general attributes of graduates at King Abdulaziz University, both on the institutional and program levels.
- 4- KAU Graduate Attributes Policy aims to organize the mechanisms of application and documentation, both on the institutional and program levels.

Policy Scope: This policy applies to all study programs at King Abdulaziz University so that it is applicable to all students enrolled in all KAU study programs.

B. Definitions

Graduate: The student who completed his/her academic program at King Abdulaziz University and obtained the degree and graduation document.

Graduate Attributes (Gas): The educational experiences, skills and qualities, which students must acquire during their study time at the university as agreed upon by the university community, employers and society; such GAs qualify graduates to integrate into work environments, locally and internationally.

Alignment: This refers to the processes of linking and coherence of the general GAs with the University academic and support sectors to ensure the achievement of the attributes.

Matrix: It is a tool for linking GAs with the University academic and support sectors



to ensure achievement of the GAs.

Evaluation: Mechanisms to measure the achievement of the GAs.

Exit Exam: This is the direct measurement of the general GAs.

Graduate Questionnaire: It is the indirect measurement of the general GAs.

Employers' questionnaire: It is the indirect measurement of the general GAs.

Documentation: It is a practice to ensure the application of the alignment of the GAs with programs; it regulates the mechanisms to provide application guides for different hierarchical levels.

C. Policy Text

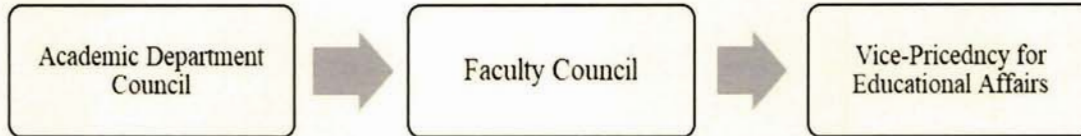
I. General Terms

1. The GAs are a sustainable link between the University's outputs and the labor market.
2. KAU GAs are the main driving force to developing curricula and students' learning processes in all academic programs at the university.
3. All KAU study programs are subject to the process of implementing/applying graduate attributes in terms of their results, and inclusion of relevant features in teaching, learning and assessment activities.
4. GAs should take into consideration consistency with the University's mission and the Saudi Qualifications Framework.
5. GAs are aligned with labor market requirements and they take into consideration the needs of internal and external stakeholders.
6. GAs must be explicitly referred to in the objectives of the study programs, assessment criteria and relevant courses.
7. Study programs should put into consideration in their design consistency between University GAs, program GAs, educational outcomes, teaching and assessment methods.
8. Study programs use various methods to evaluate and measure the achievement of the GAs and set indicators to measure performance to follow up the achievement of these attributes.
9. King Abdulaziz University and the Academic Programs Department are committed to the continuous periodic review of the GAs; this should be done synchronically with the periodic review of the vision and mission of the university

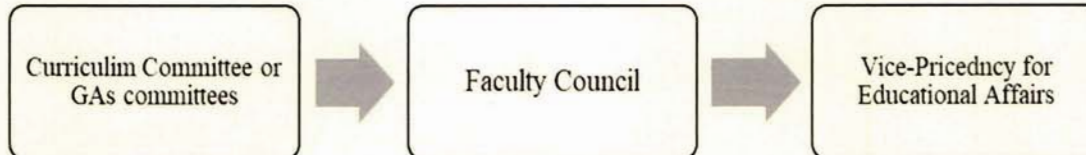


- and the study programs in each strategic plan.
10. The general GAs are measured through the Exit Exam, which is a direct measurement of the GAs and the extent of employers' satisfaction, while the graduates' self-evaluation through questionnaires reflects the indirect measurement of the GAs.
 11. The alignment matrices of educational programs are documented according to the following mechanism:

Model A: For Faculties with multiple programs in different departments:



Model B: For Faculties with one program in different academic departments:



II. KAU Graduate Attributes

Creative and Critical Thinking: Graduates are distinguished by their ability to solve problems, and they can apply critical, creative and evidence-based knowledge to develop solutions to society challenges, which guarantees sustainable development in social, political and economic aspects.

Team Working: Graduates collaborate with others and share information to achieve research and knowledge development goals.

Effective Communication: Graduates communicate effectively and they pioneer the effective community engagement and successful entrepreneurship.

Leadership and Professionalism: Graduates have professional conduct, the potential to become entrepreneurs and assume leadership roles in their professional lives and their



communities.

English Proficiency: Graduates master English language skills for effective communication, which leads to innovation and entrepreneurship.

Discipline Excellence: Graduates understand their disciplines in a comprehensive manner and are able to apply specialized knowledge in interdisciplinary contexts to their work fields.

Technological skills: Graduates have the skills and knowledge of modern technology and artificial intelligence that enable them to adapt to new technologies and acquire more skills in the contemporary digital world.

Lifelong learning: Graduates become lifelong learners who are curious to know and they gather pace to seek information to solve problems and make a difference in society.

Cultural competency: Graduates respect and communicates effectively with other people from diverse cultural backgrounds.

Independence and proactivity: Graduates are able to act with confidence based on their personal and cultural values and they can start their own projects to solve problems relevant to their work or communities.

Resilience and adaptation: Graduates have the skills to deal with different types of challenges to maintain the sustainability of their professional and social communities.

III. KAU Graduate general learning outcomes aligned with GAs:

KAU graduates are able to:

1. Solve problems and apply critical, creative and evidence-based knowledge to produce innovative solutions for community challenges.
2. Collaborate openly with others and share information to achieve research and knowledge development goals.
3. Communicate effectively to understand topics and context, and engage with their community and be successful entrepreneurs.
4. Demonstrate professional behavior and have the potential to be entrepreneurs and assume leadership roles in their careers and communities.
5. Use English language effectively for oral and written communications, which



- leads to innovation and entrepreneurship.
6. Apply discipline's knowledge and skills in a multidisciplinary work context.
 7. Apply different digital and artificial intelligence skills in a manner that enables graduates to adapt to new technologies and acquire more skills in the contemporary digital world.
 8. Seek information for problem solving, participate in knowledge development, and maintain sustainability.
 9. Show respect and communicate effectively with people from diverse cultures and backgrounds.
 10. Act with confidence based on personal and cultural values and initiate own projects to solve career or community problems.
 11. Cope with different types of challenges to maintain the sustainability of their professional and social communities.

This policy can be revised and updated at any time without prior notice. All revisions of this policy supersede the previous policy and they are valid immediately upon approval.

D. Consultations (Supportive of Policy Drafting)

- Saudi Arabia Vision 2030
- Vision, mission and objectives of the University
- Institutional Accreditation Standards – Program Accreditation Standards – Education and Training Evaluation Authority.
- The Saudi Qualifications Framework.
- KAU Administrative and academic structure

E. Forms

- Alignment Matrices for study programs (6 matrices)
- Alignment matrices for student activities
- Exit Exam Blueprint Template



Tables for the Alignment of KAU GAs and The Academic Programs at KAU

Table 1: Alignment between KAU graduate attributes and Program X graduate attributes

	KAU graduate attributes	Program X graduate attributes

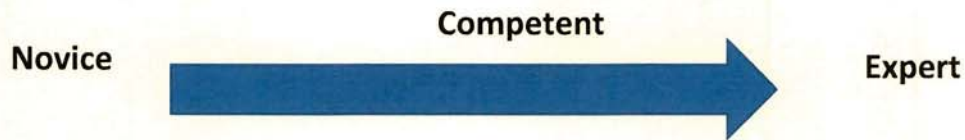
Table 2: Alignment between Program X mission and Program X graduate attributes

Attributes/Mission Dimensions							

ع



Table 6: Framework for the alignment between Program graduate attributes and Teaching and Assessment methods.



Graduate Attributes		Preparatory Year	Speciality Year	Field Experience/ Internship
Attribute#	Teaching strategies			
	Assessment Strategies			
Attribute#	Teaching strategies			
	Assessment Strategies			
Attribute#	Teaching strategies			
	Assessment Strategies			
Attribute#	Teaching strategies			
	Assessment Strategies			

الله



Exit Exam blueprint Templet

KAU GAs	Program GAs	PLOs	Weight	No. Questions and Type	Target Level of Achievement%	Actual Level of Achievement%
<i>Creative and Critical thinking</i>						
<i>Team working</i>						
<i>Effective Communication</i>						
<i>Leadership and professionalism</i>						
<i>English Proficiency</i>						
<i>Discipline Excellence</i>						
<i>Technological skills</i>						
<i>Lifelong learning</i>						
<i>Cultural competency</i>						
<i>Independence and proactivity</i>						
<i>Resilience and adaptation</i>						

Instructions:

- 1- The alignment of KAU GAs with Program' GAs and PLOS should be match Matrix 1 and 4 in the KAU GAs alignment Matrices Templet.
- 2- Weight and Target level of achievement should be determine by the academic program.
- 3- Actual Level of achievement is the sum of the difficulty level of the Questions for each PLO.
- 4- If you run Program Exit Exam by courses, you need to match it with Matrix 5 in the KAU GAs alignment Matrices Templet.
- 5- PLEASE USE THE CODES OF EACH PLO, for example 1.1, 2.1, 3.1

س